

3D DESIGN: LESSON 2

SUMMER TERM



Following lesson 1, we will now continue to build your skills and knowledge of how to create portraits of faces and facial features. Confidence in this will help you to make effective 3D pieces later, like the ones on the next slide.

Although most of us do not have the materials at home to make the 3D pieces, we will be able to use this time to improve your understanding of the face, so that when we return you will be really confident to create 3D artworks that look realistic and effective.

MRS SMITH



3D DESIGN: LESSON 2

SUMMER TERM

3D ME

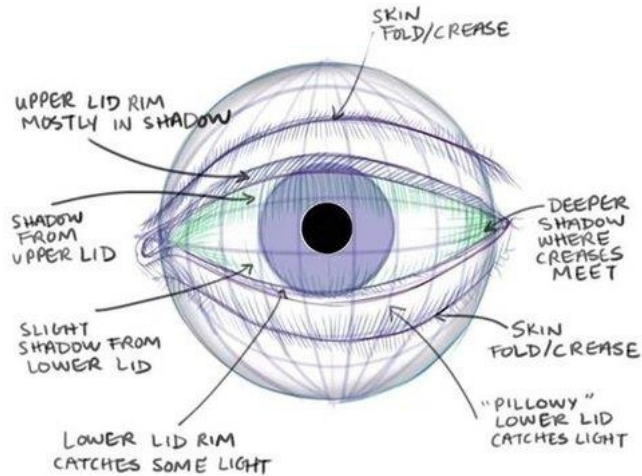


[HTTPS://WWW.YOUTUBE.COM/
WATCH?V=DU0VDPO43JQ](https://www.youtube.com/watch?v=DU0VDPO43JQ)

**5 minute starter: Watch this video of a face being sculpted.
Q. Why are proportions important when representing a face?**

LESSON 2: WHO AM EYE?

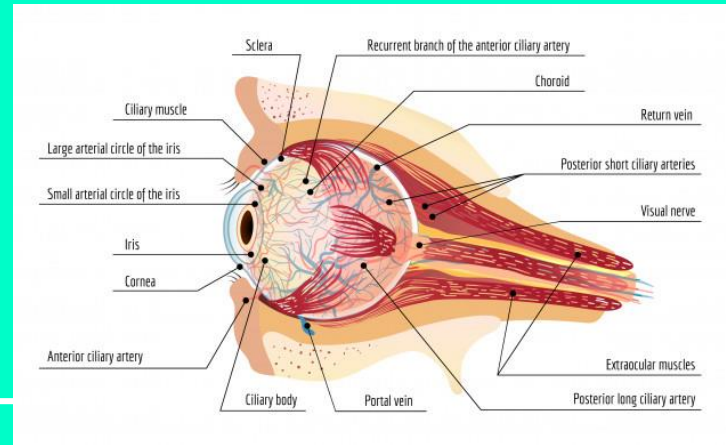
EYE LIGHT



Learning how the face is proportioned is something you may already have done in art. But is good to recap and improve.

We'll start with eyes...

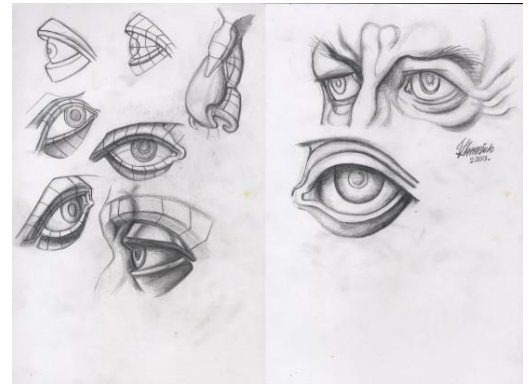
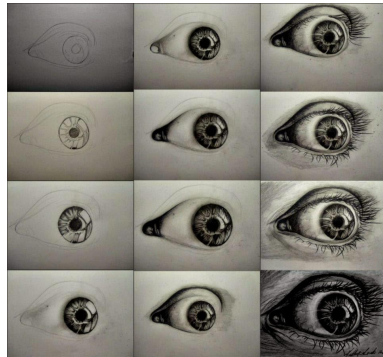
Remember that eyes are 3D and spherical - we only see a small part of them.



LESSON 2: WHO AM EYE?

Some of you chose the drawing task last lesson, we're going to refine that skill now. Follow the stages on the next slide to create a realistic eye study step by step. There is a more challenging one too if you want to try it!

Ext. If you feel confident with it, you can attempt to make a page of eye drawings.



MAIN TASK

EYE DRAWING STEP BY STEP (BASED ON PROKO TUTORIALS)

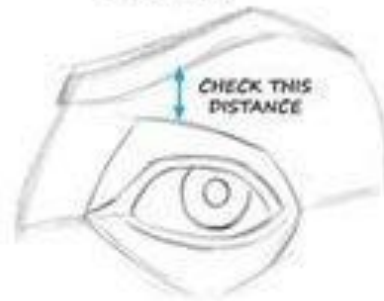
START BY FOCUSING ON
PROPORTION AND SHAPE DESIGN
OF THE MAJOR SHAPES



GROUP THE LIDS, SCLERA AND
IRIS INTO 1 SHAPE AT FIRST,
AND GET IT ACCURATELY PLACED



ADD DETAILS LIKE THE
THICKNESS OF THE EYELIDS
AND EYEBROW



CHECK THIS
DISTANCE

SHADE IN TWO VALUES,
DESIGNING THE PATTERN
OF LIGHT AND DARK



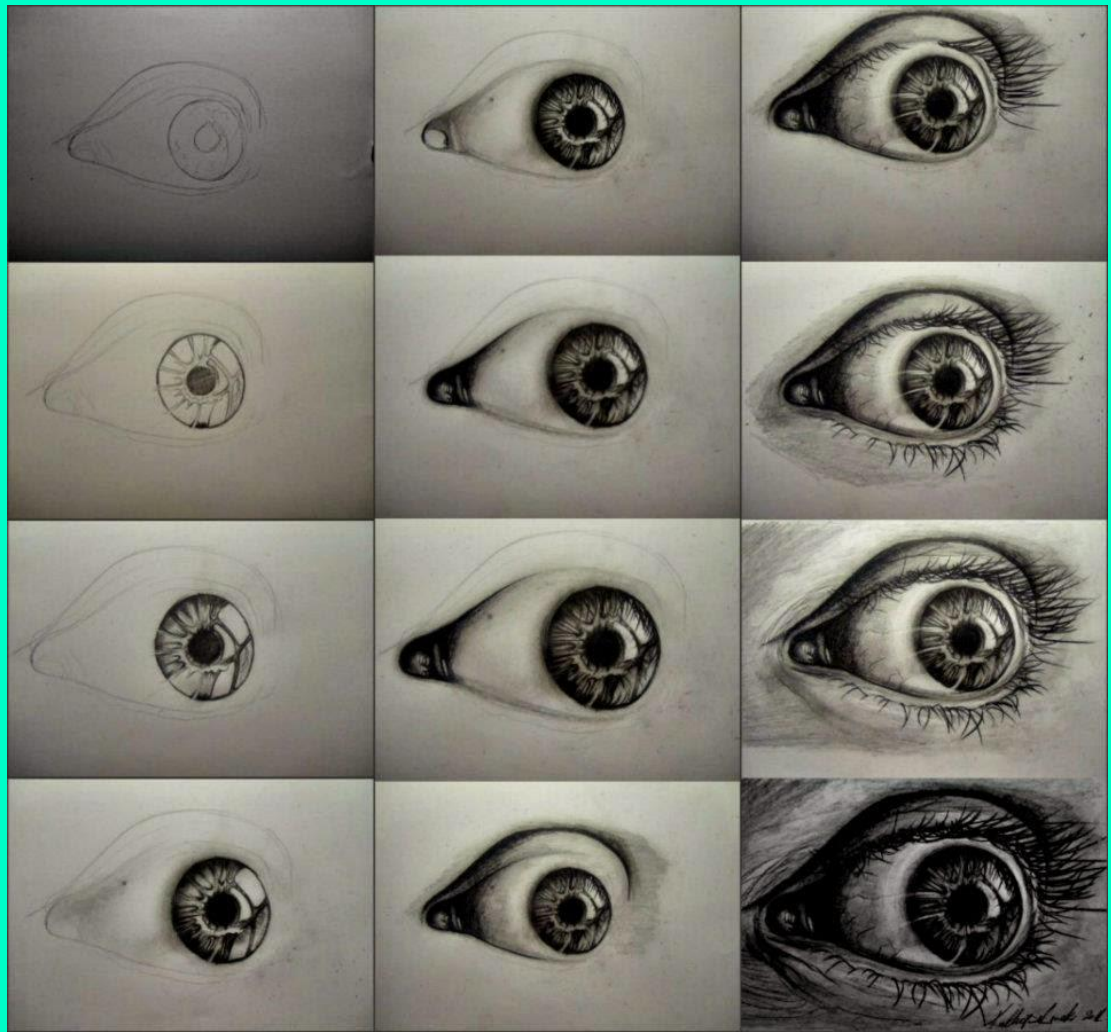
ADD DARK ACCENTS AT THE
CORE SHADOWS, DARK CREASES
AND AREAS WITH DARK LOCAL
VALUE LIKE EYEBROWS

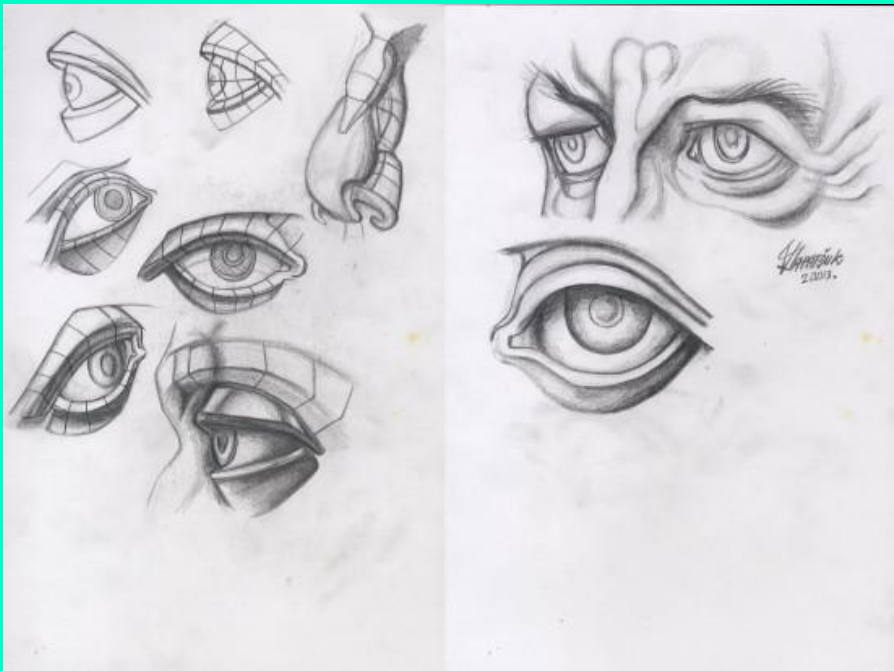


ADD HIGHLIGHTS AND
HALFTONES TO MAKE FORMS
READ MORE 3-DIMENSIONAL,
AND CLEAN UP SHAPES/EDGES

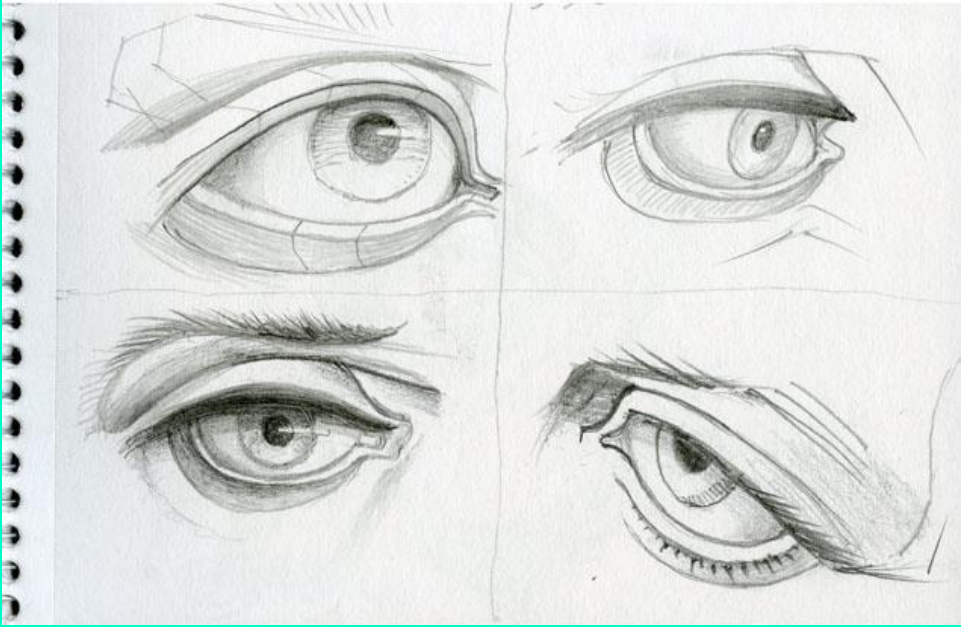


CHALLENGE TASK





EXTENSION WORK



LESSON 2: WHO AM EYE?

- If you would like any more advice, please ask via school email.

P.S. On the next slide is a recipe to make paper clay - if you try it, let me know how you get on? It might be a good alternative to try at home.

[HTTPS://WWW.YOUTUBE.COM/
WATCH?V=ONMIIQVQXAU](https://www.youtube.com/watch?v=ONMIIQVQXAU)

Making Paper Clay